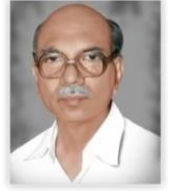




**P.B.R. VISVODAYA INSTITUTE OF TECHNOLOGY & SCIENCE  
(AUTONOMOUS)**

*(Affiliated to J.N.T.U.A, Approved by AICTE and Accredited by NAAC)*  
**KAVALI – 524201, S.P.S.R Nellore Dist., A.P. India. Ph: 08626-243930**

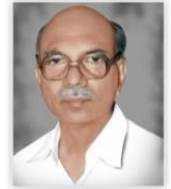


**7.1.2 - THE INSTITUTION HAS FACILITIES FOR ALTERNATE SOURCES OF ENERGY AND ENERGY CONSERVATION MEASURES SOLAR ENERGY BIOGAS PLANT WHEELING TO THE GRID SENSOR-BASED ENERGY CONSERVATION USE OF LED BULBS/ POWER EFFICIENT EQUIPMENT**



**P.B.R. VISVODAYA INSTITUTE OF TECHNOLOGY & SCIENCE  
(AUTONOMOUS)**

(Affiliated to J.N.T.U.A, Approved by AICTE and Accredited by NAAC)  
KAVALI – 524201, S.P.S.R Nellore Dist., A.P. India. Ph: 08626-243930



**7.1.2. The Institution has facilities for alternate sources of energy and energy conservation measures :**

1. Solar energy.
2. Biogas plant.
3. Wheeling to the Grid.
4. Sensor-based energy conservation.
5. Use of LED bulbs/ power efficient equipment

**7.1.2 The Institution has facilities for alternate sources of energy and energy conservation measures**

**7.1.2.1 Percentage of annual power requirement of the Institution met by the renewable energy sources**

**Response:** 63.6

Annual power requirement met by the renewable energy sources (in KWH)

**Response:** 89222

Total annual power requirement (in KWH)

**Response:** 127460

**File Description**

**Document**

Details of power requirement of the Institution met by renewable energy sources

**89222**

Any additional information

**100 KVA & 125 KVA GENERATORS**

Link for Additional Information

**7.1.2.2 Wheeling to Grid:**

The PBR Visvodaya Institute of Technology and Science established **200 KW Grid connected roof top Solar Plant in 2017, Net meter** is fixed at transformer to know the readings of units send to Grid as well as the number of units received from Grid.

**File Description**

**Document**

Details of power requirement of the Institution met by renewable energy sources

**89222**

Any additional information

**100 KVA & 125 KVA GENERATORS**

Link for Additional Information

**7.1.2.3 Sensor-based energy conservation:**

The PBR Visvodaya Institute of Technology and Science is using sensor based control for lights and fans of classrooms and staff rooms

**7.1.2.4 Use of LED bulbs/ power efficient equipment**

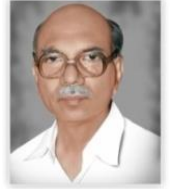
Percentage of annual lighting power requirements met through LED bulbs

**Response:** 48.14



**P.B.R. VISVODAYA INSTITUTE OF TECHNOLOGY & SCIENCE  
(AUTONOMOUS)**

*(Affiliated to J.N.T.U.A, Approved by AICTE and Accredited by NAAC)*  
**KAVALI – 524201, S.P.S.R Nellore Dist., A.P. India. Ph: 08626-243930**



**The Institution has facilities for alternate sources of energy and energy conservation  
measures - Solar energy**

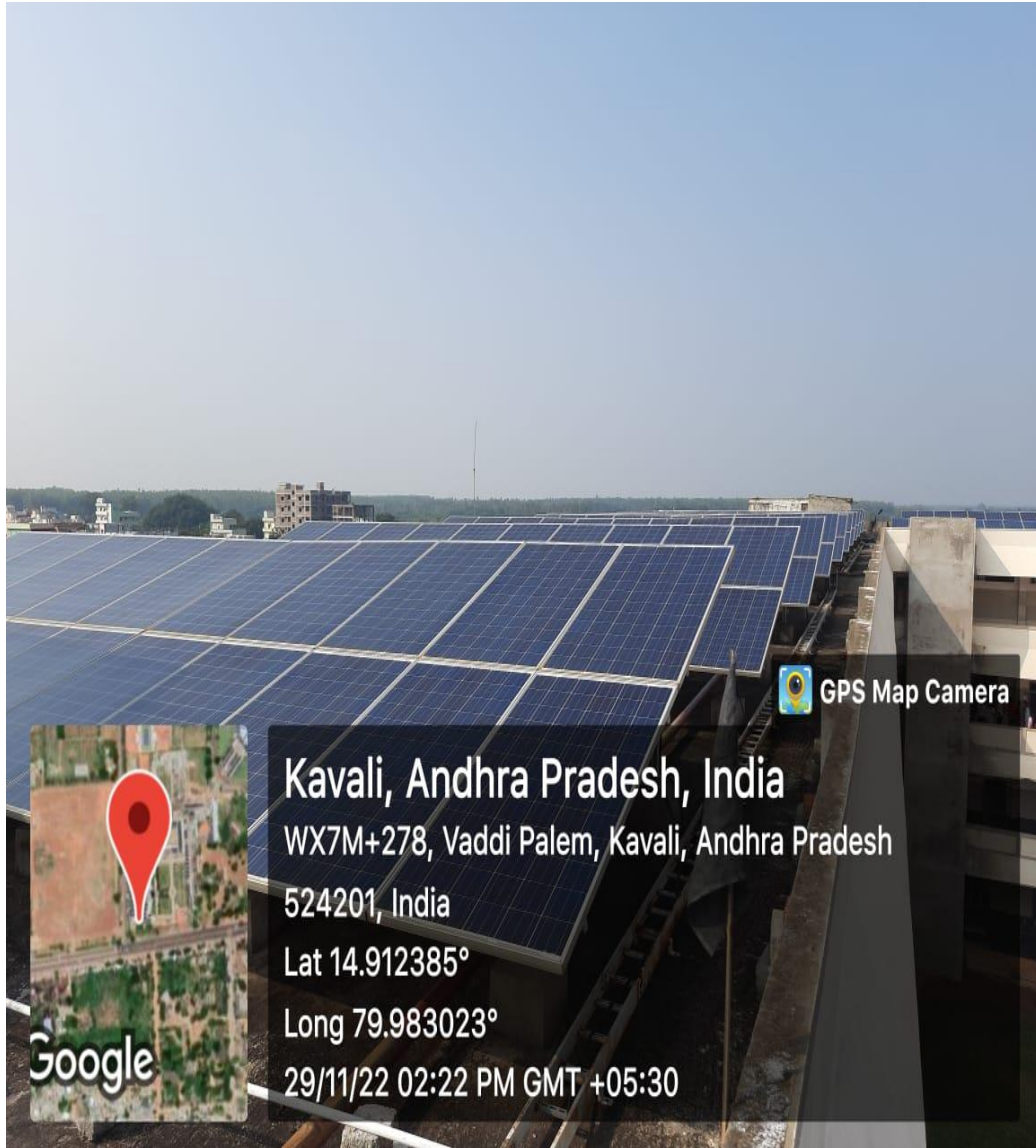


Figure: Grid Connected Solar Plant



**P.B.R. VISVODAYA INSTITUTE OF TECHNOLOGY & SCIENCE  
(AUTONOMOUS)**

*(Affiliated to J.N.T.U.A, Approved by AICTE and Accredited by NAAC)*  
**KAVALI – 524201, S.P.S.R Nellore Dist., A.P. India. Ph: 08626-243930**

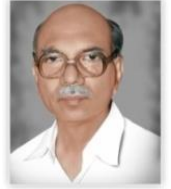


Figure: Grid Connected Solar Plant



**P.B.R. VISVODAYA INSTITUTE OF TECHNOLOGY & SCIENCE  
(AUTONOMOUS)**

*(Affiliated to J.N.T.U.A, Approved by AICTE and Accredited by NAAC)*  
**KAVALI – 524201, S.P.S.R Nellore Dist., A.P. India. Ph: 08626-243930**



Figure: Use of LED bulbs/ power efficient equipment



**P.B.R. VISVODAYA INSTITUTE OF TECHNOLOGY & SCIENCE  
(AUTONOMOUS)**

*(Affiliated to J.N.T.U.A, Approved by AICTE and Accredited by NAAC)*  
**KAVALI – 524201, S.P.S.R Nellore Dist., A.P. India. Ph: 08626-243930**

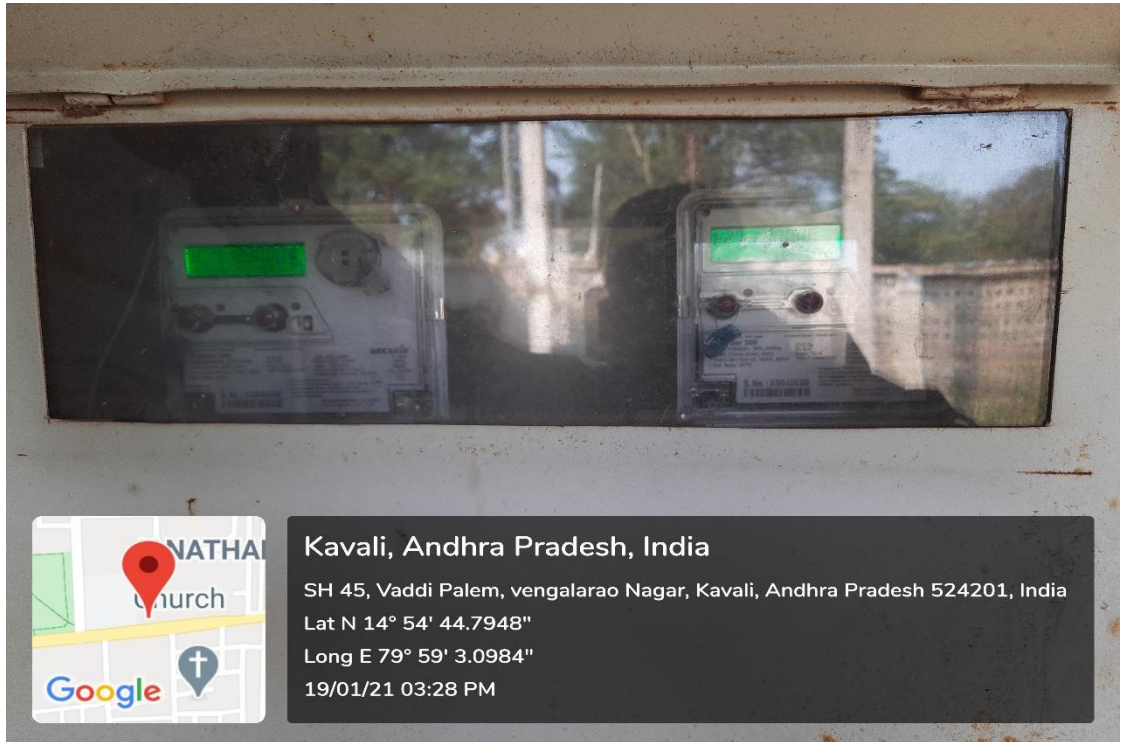
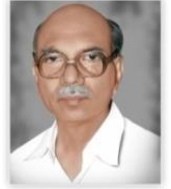


Figure: Grid Connected Solar Plant Net Meter



Figure: Grid Connected Solar Plant Net Meter



**P.B.R. VISVODAYA INSTITUTE OF TECHNOLOGY & SCIENCE  
(AUTONOMOUS)**

(Affiliated to J.N.T.U.A, Approved by AICTE and Accredited by NAAC)  
KAVALI – 524201, S.P.S.R Nellore Dist., A.P. India. Ph: 08626-243930



Figure: 125 KVA Generator

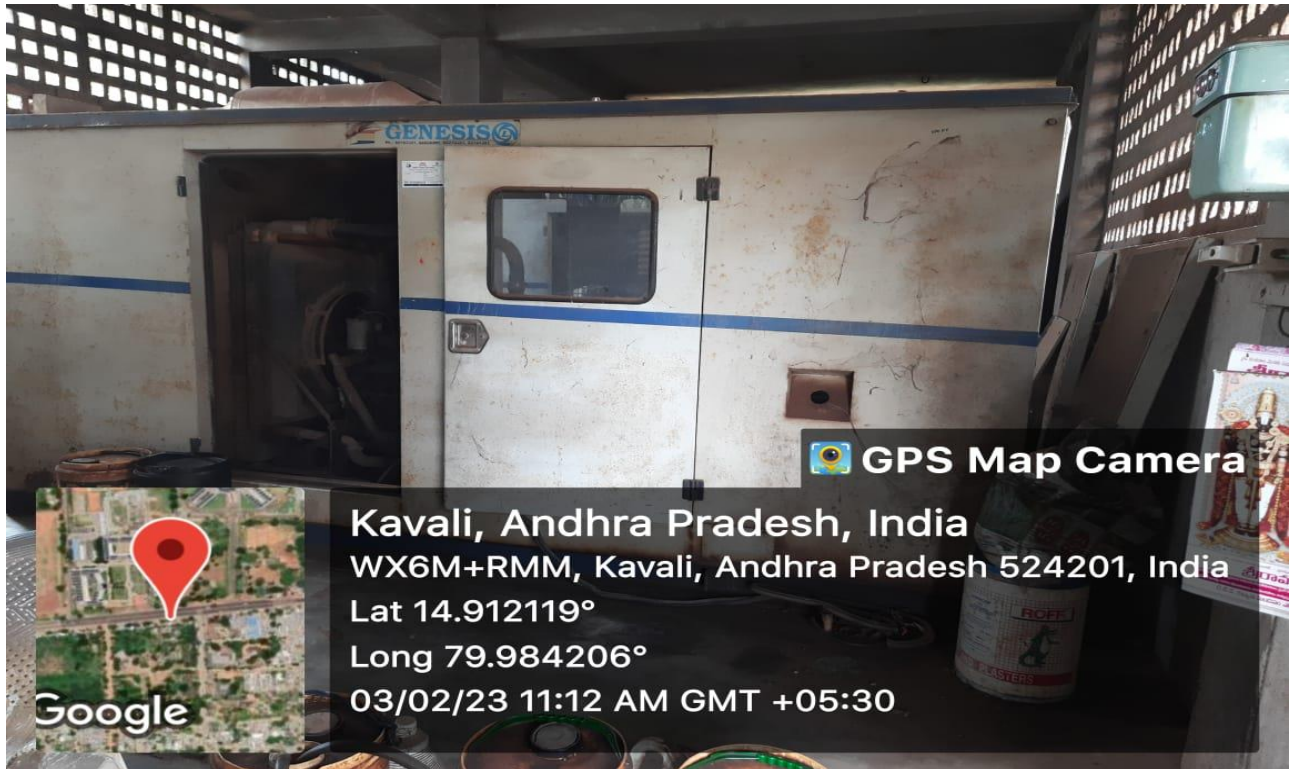


Figure: 100 KVA Generator